



DURABLE SOLUTIONS, ENDLESS POSSIBILITIES

@romexhardscapes



www.romexhardscapes.com | 1-844-529-2330



ROMEX® PERMEABLE GRAVEL BINDING

BONDED AGGREGATE FOR RESIDENTIAL & COMMERCIAL APPLICATIONS

ENDLESS POSSIBILITIES

How it Works & Aggregate Options

APPLICATIONS

Residential

Commercial

WHY ROMEX Gravel Binding

Bonded Aggregate Benefits

PRODUCTS

PROFI-DEKO | Gravel Binder

D7000 | Rock Dust Stabilizer

ASSEMBLIES

System Buildup Materials & Options

Sustainable and decorative drainage options.

HIGHLY PERMEABLE & INCREDIBLY DURABLE



No More Loose Gravel

ROMEX gravel binding products create solid, highly permeable and low maintenance surfaces making them a great solution for decorative drainage areas and helping to sustainably combat stormwater. Work with water, not against it.



ENDLESS POSSIBILITIES

How it Works &
Aggregate Options

HOW IT WORKS?

ROMEX gravel binding bonds stones at every contact point leaving pathways for the water to flow through. The aggregate remains firmly intact even when withstanding pressure washing or vehicle traffic, preventing loose gravel from making a mess.

AGGREGATE OPTIONS

Our gravel binding products are compatible with any clear or fine aggregate types up to 6" | 152mm in diameter and will last for years.

- ✔ Pea Gravel
- ✔ Glow Stone
- ✔ River Rock
- ✔ Recycled Glass
- ✔ Rock Dust
- ✔ Unlimited Possibilities...





APPLICATIONS

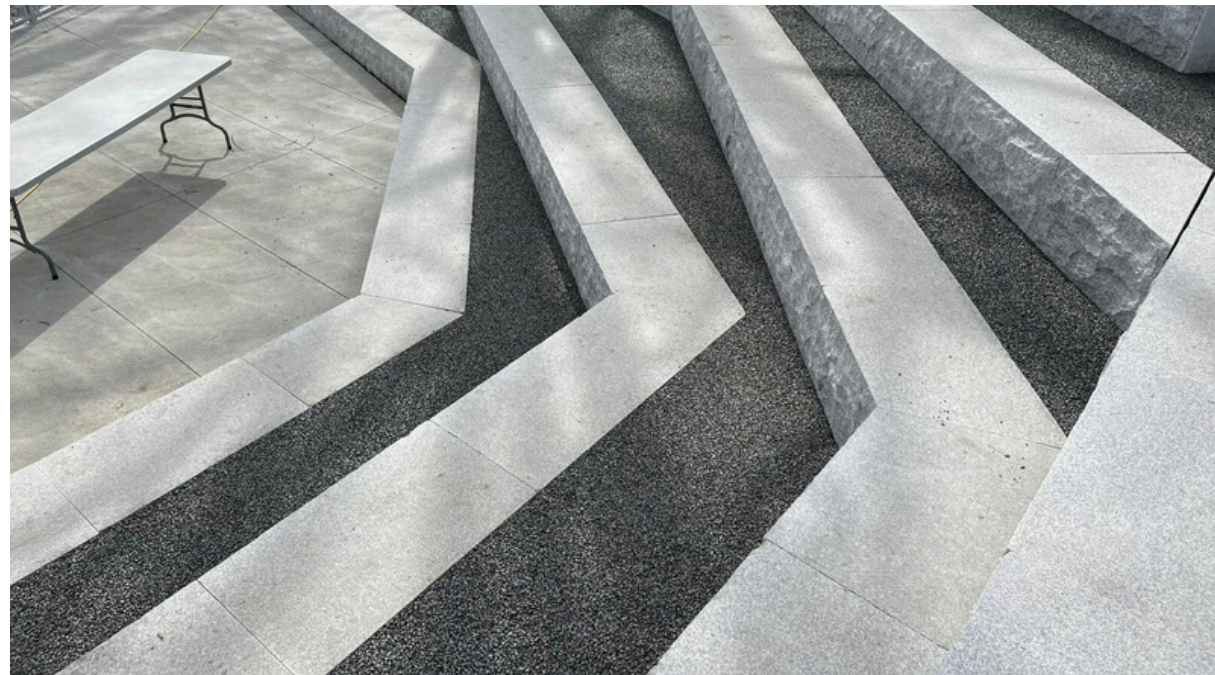
Residential &
Commercial



RESIDENTIAL

A unique and stunning choice for driveways, pathways and patios. ROMEX gravel binding is perfect for any residential project with an owner who desires a more decorative or sustainable drainage area that can combat stormwater with ease.





COMMERCIAL

From public parks to sidewalk tree surrounds, ROMEX gravel binding has many uses for commercial applications. These decorative drainage areas not only eliminate loose aggregate from making a mess but they are also a more sustainable alternative that prevents tree uproot damage and complies with strict permeability regulations on green infrastructure projects, all while remaining cost-effective.





WHY ROMEX GRAVEL BINDING?

Bonded Aggregate Benefits



BONDED AGGREGATE BENEFITS



Highly Water Permeable

A more sustainable alternative that can comply to strict permeability regulations and saves surfaces from root upheave damage.



ADA Compliant

With the right choice of local aggregate, ROMEX bonded gravel can meet ADA compliance standards with ease.



Ant & Weed Resistant

Our solid resin based products prevent ants and weeds from making a mess, keeping your surface looking like the day it was installed.



Pressure Washer Safe

Reduced maintenance is another major benefit of our bonded gravel. Simply pressure wash the surface at 2000PSI to clean any debris, restoring permeability.



Easy to Use

Our gravel binding products are incredibly easy to install, allowing you to complete more jobs in less time.



Vehicle Rated

ROMEX gravel binding can support light vehicle traffic or withstand up to 40T when used in combination with our TRASS BED paver bedding.



PRODUCTS

Gravel Binder &
Rock Dust Stabilizer

PROFI-DEKO

Gravel Binder

PROFI-DEKO bonds any clear **aggregate without fines**. Simply mix the resin with your choice of gravel and trowel until level to create a durable and highly permeable surface.

- Washed, dry and dust-free aggregate
- Prevents loose gravel
- For pedestrian & light vehicular loads
- Safe non-slip surface



Highly Permeable



Scan for more info!



Ideal for tree surrounds and decorative drainage areas.





D7000

Rock Dust Stabilizer

D7000 bonds rock dust or any **aggregate with fines**. To install this innovative product, simply pour it into a watering can, evenly coat the surface, run over it with a plate compactor then apply another top coat to create a solid surface that remains permeable.

- Suitable for aggregates with fines
- Easy topical application
- Reduces erosion on sloped areas
- Prevents dust on gravel surfaces
- Prevents weed growth



Highly Permeable



Scan for more info!



Ideal for garden pathways and public spaces.



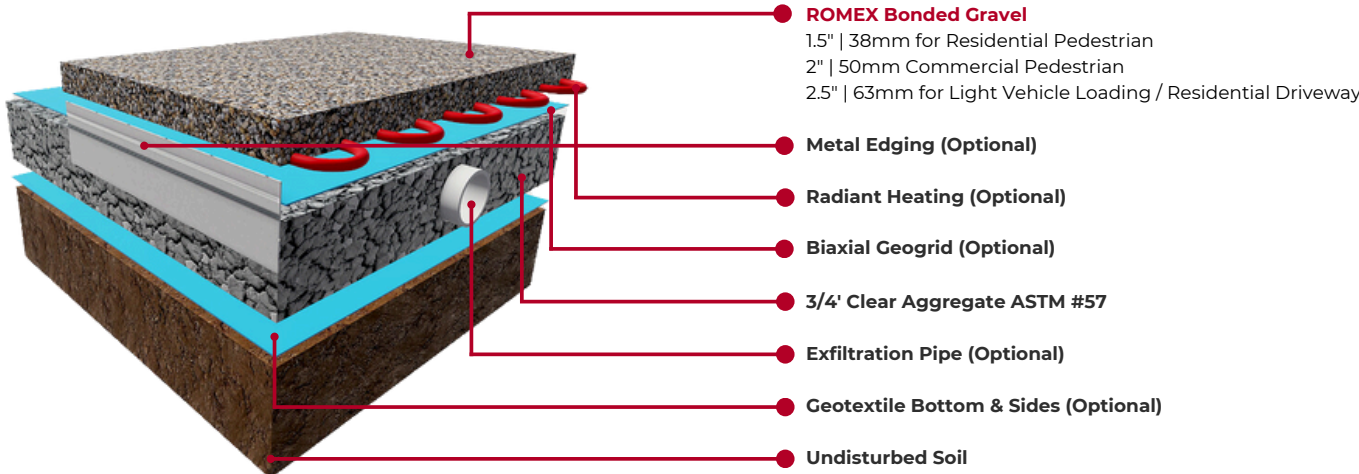
ASSEMBLIES

System Buildup
Materials & Options

SYSTEM BUILDUPS

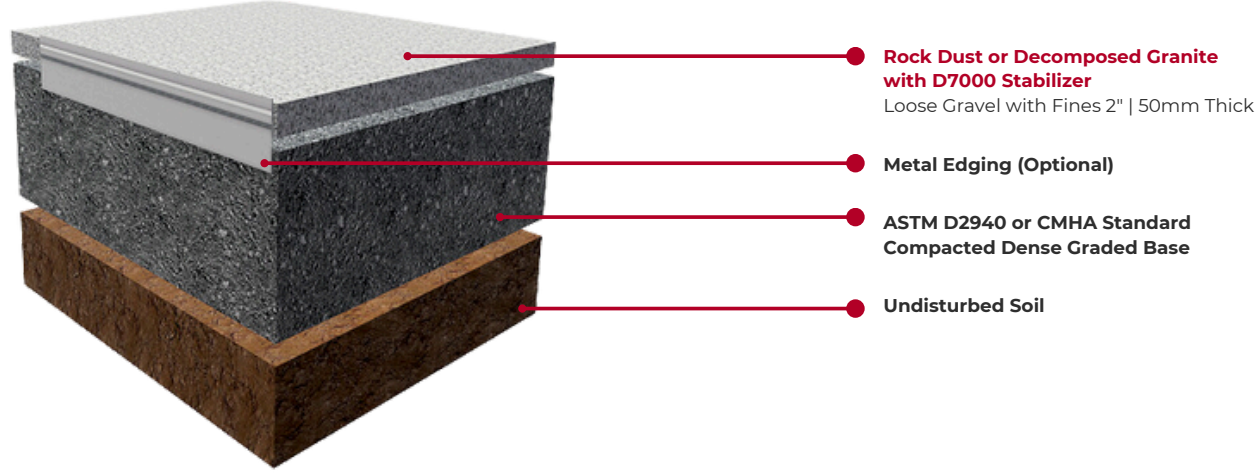
Bonded Gravel

Highly permeable, UV stable system for a wide variety of uses including but not limited to pathways, tree surrounds, driveways or where highly permeable surfaces are required, using as a drain replacement.



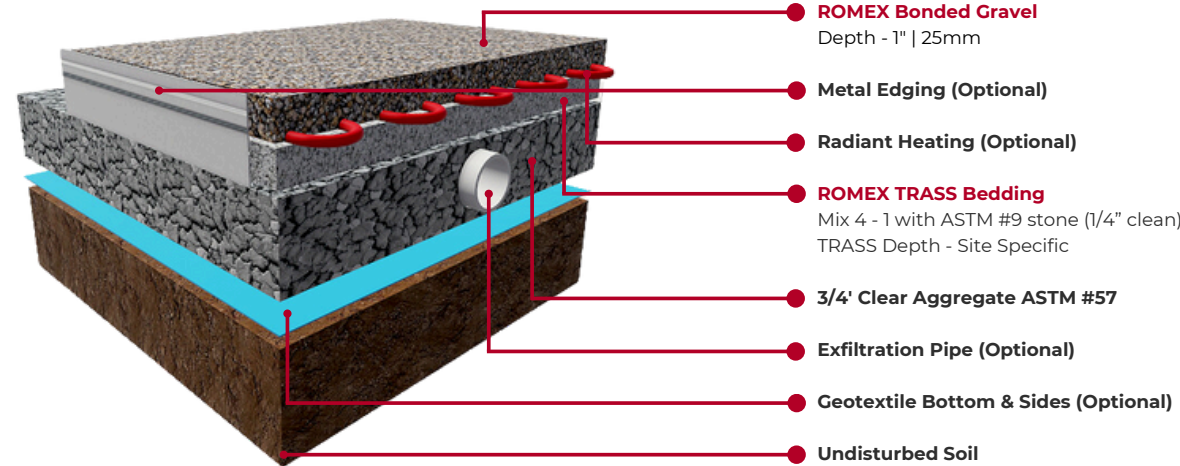
Stabilized Rock Dust

Provides a stable and dust free application while preventing loose gravel. Perfect for pathways and public spaces.



Bonded Gravel with TRASS

Similar to the above assembly but able to withstand heavy vehicle loading up to 40T.



KEEP IN MIND...

To ensure the stability of the bonded aggregate, applications may require a top coat every so often depending on the climate and general site conditions. For example, commercial sites will probably require a top coat sooner than residential applications. See below for the estimated timeline for each product:

- D7000** | 3 - 10 years
- PROFI-DEKO** | 3 - 10 years