



ROMEX® D7000

Rock Dust Stabilizer

D7000 bonds rock dust or any aggregate with fines, including decomposed granite. To install this innovative product, simply pour it into a watering can, evenly coat the surface, compact and then apply another top coat to create a stable, solid surface that prevents erosion and dust.

Ideal for garden pathways and public spaces.

- Suitable for aggregates with fines
- Easy topical application
- Reduces erosion on sloped areas
- Prevents dust on gravel surfaces
- Prevents weed growth



No Erosion



ADA Compliant

Compatible with any aggregate with fines!



ROMEX® D7000

Rock Dust Stabilizer

APPLICATION

Site Requirements: Ensure the subsurface is well compacted and free of settlement. Adhere to applicable regulations and provided data sheets.

Preparation: Ensure the base is semi-permeable to water or has sufficient slope for drainage. Use angular gravel mixtures with fines such as decomposed granite. Maintain a fine/dust fraction of at least 60% for optimal bonding. Tape off adjacent areas that are not to be strengthened.

Application: Pour the contents into a watering can with an inclined spray attachment and distribute evenly over the pre-wet surface. Allow 10-15 minutes for absorption. Then use a plate compactor or hand tamper to create a smooth surface. Recommended consumption: approximately 85 square feet per 5.2 gallon | 20-litre container in two coats, apply approximately 60% of the material on the first coat, compact then add the second in the following 1-2 hours after the first coat.

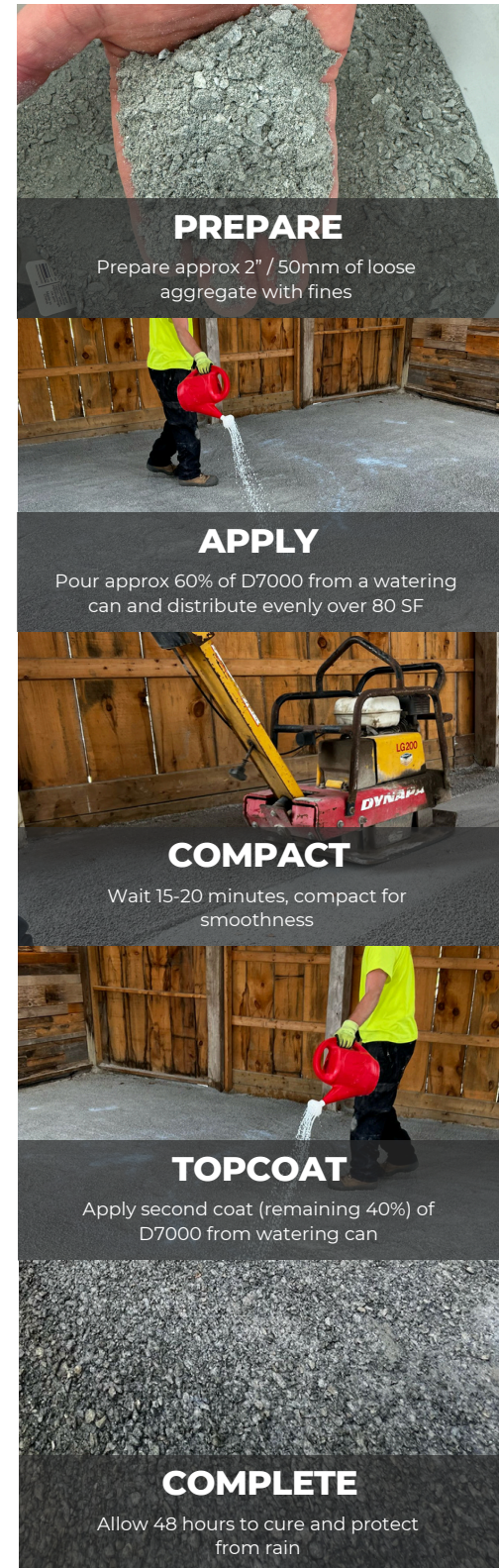
Professional Tip: For heavily used surfaces, reapply ROMEX D7000 after hardening using a sprayer, watering can, or roller for added strength. Resealing requirements: approximately 350 square feet per 20-litre container, repeated every 3 - 10 years depending on surface use.

Subsequent Treatment: Protect the treated area from rain for 48 hours, ensuring air circulation under the rain protection.

Important Information: Insufficient fine/dust content in gravel mixtures will result in inadequate binding. Wear proper personal protective equipment (PPE) during work. Regularly remove moss, leaves, and weeds from the surface. Some or occasional stone detachment may occur depending on the installation, aggregate choice and traffic, which is natural and not a defect. Curing time varies: faster in hot weather, and slower in cold weather.

System	1-component special liquid	
Application time at 20 °C 68 °F	20-30 minutes	ROMEX®-norm 04
Application temperature	> 10 °C > 50 °F At lower temperatures slow hardening, at high temperatures quick hardening	
Re-opening of surface at 20 °C 68 °F	after 48 hours can be walked on, after 6 days fully load bearing	
Water permeability	After application the covering basically remains just as permeable to water as before application.	
Storage life	min. 12 months	
Storage	frostfree, protect container against direct sunlight	

1-844-529-2330 | www.romexhardscapes.com | info@romexhardscapes.com



PREPARE

Prepare approx 2" / 50mm of loose aggregate with fines

APPLY

Pour approx 60% of D7000 from a watering can and distribute evenly over 80 SF

COMPACT

Wait 15-20 minutes, compact for smoothness

TOPCOAT

Apply second coat (remaining 40%) of D7000 from watering can

COMPLETE

Allow 48 hours to cure and protect from rain



CALL BEFORE YOU INSTALL

@romexhardscapes

