



DURABLE SOLUTIONS, ENDLESS POSSIBILITIES

@romexhardscapes



www.romexhardscapes.com | 1-844-529-2330



ROMEX® NORTH AMERICA

DISCOVER OUR DIVERSE RANGE OF APPLICATIONS, PRODUCTS & ASSEMBLIES

PRODUCT LINES

- Permeable Jointing
- Permeable Bedding
- Permeable Gravel Binding

WHY ROMEX?

- Permeability & Maintenance
- Durability & Warranty
- Innovative German Engineering
- Peace of Mind

APPLICATIONS

- Patios
- Pathways
- Pool Decks
- Driveways
- Tree Surrounds
- Public Spaces
- Roads and Streets

PRODUCTS

- FUGENSAND | Jointing Sand & Stabilizing Sealer
- ECOFINE | Resin Jointing Sand
- FLEX JOINT | Flexible Resin Jointing
- TRASS BED | Paver Bedding
- D7000 | Rock Dust Stabilizer
- PROFI-DEKO | Gravel Binder
- ISATec Earth Anchors | Paver Displacement Tool

ASSEMBLIES

- Standard Buildups
- Special Buildups

RESOURCES

- Educational Tools & Videos

DURABLE SOLUTIONS, ENDLESS POSSIBILITIES



Our History

ROMEX was founded in 1989 in Cologne, Germany and has been installed in over 50 countries to date. We provide not only the products, but expert advice, planning, estimates, installer training, and world-class customer service.

Built on 35 years of success, ROMEX North America is part of the global ROMEX team and is the proud supplier of the world's most resilient permeable hardscape technology.

SINCE 1989

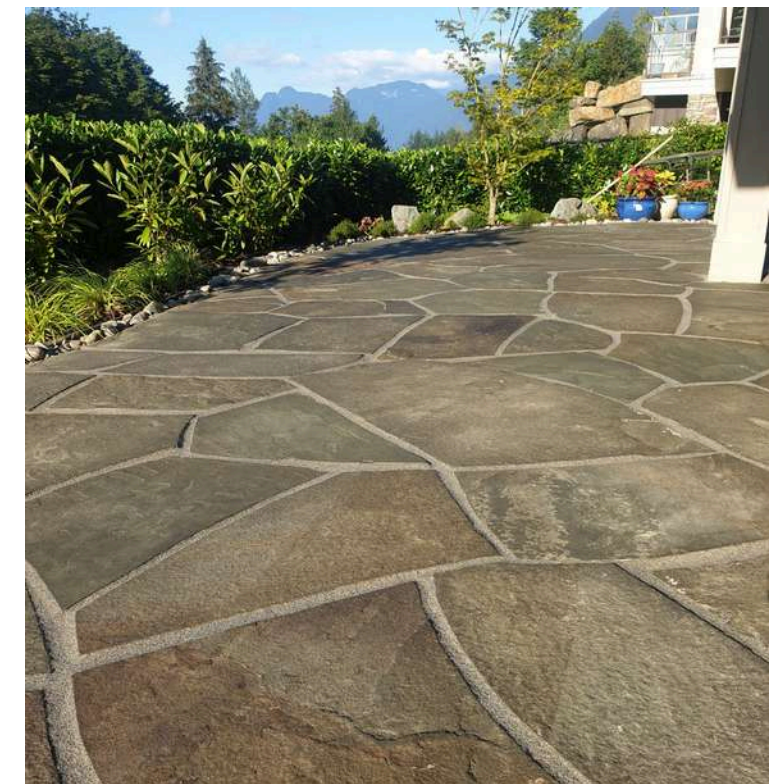
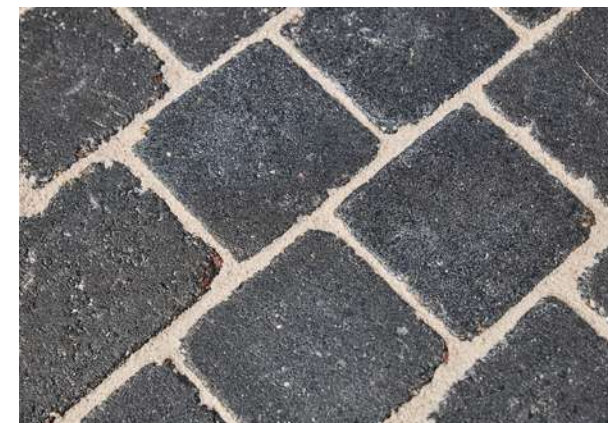
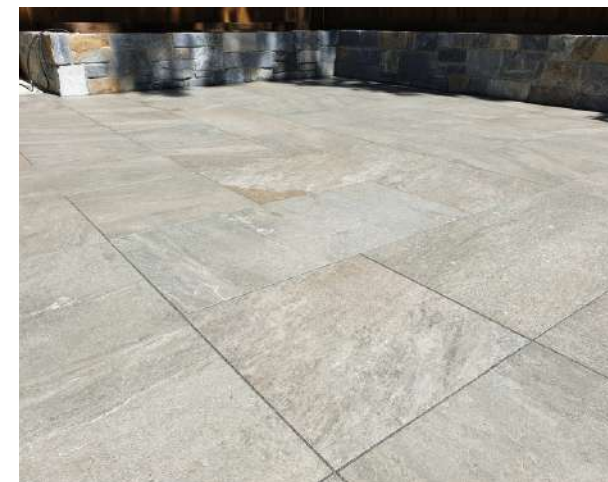


PRODUCT LINES

Permeable Jointing
Permeable Bedding
Permeable Gravel Binding

PERMEABLE JOINTING

ROMEX permeable jointing products are incredibly easy to install and will last for years to come.



Perfect for any project and paver-type.

PERMEABLE BEDDING

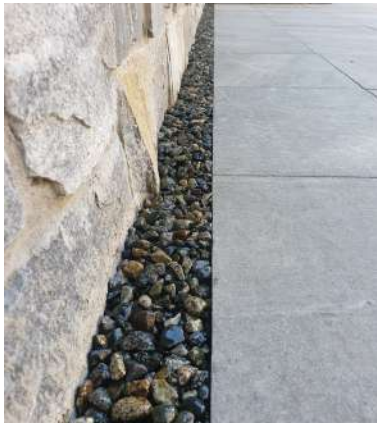
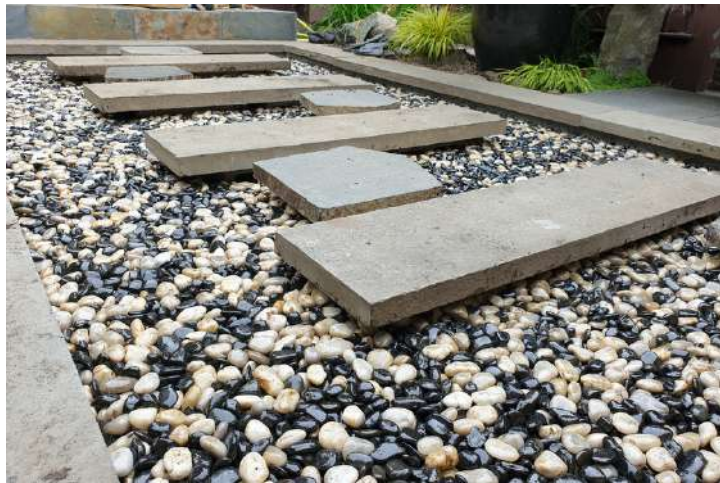
Our bedding products ensure that no surface movement occurs and are engineered for durability.



Great for all pedestrian and vehicle loading applications.

PERMEABLE GRAVEL BINDING

Our gravel binding products create solid, permeable and low-maintenance aggregate surfaces.



Ideal for tree surrounds, pathways and drainage channels.



WHY ROMEX?

Durable Solutions,
Endless Possibilities



PERMEABILITY & MAINTENANCE

Highly permeable and pressure washer safe ensuring your hardscape surface works with nature and not against it.



Paving the way to a sustainable future

DURABILITY & WARRANTY

Resistant to heavy vehicular weight and harsh weather conditions our products are so strong that we confidently offer 5 and 10 year warranty options.



Tank tested and approved





INNOVATIVE GERMAN ENGINEERING

German Engineered and American made -
Our top-of-the-line products are built on 35
years of industry experience.



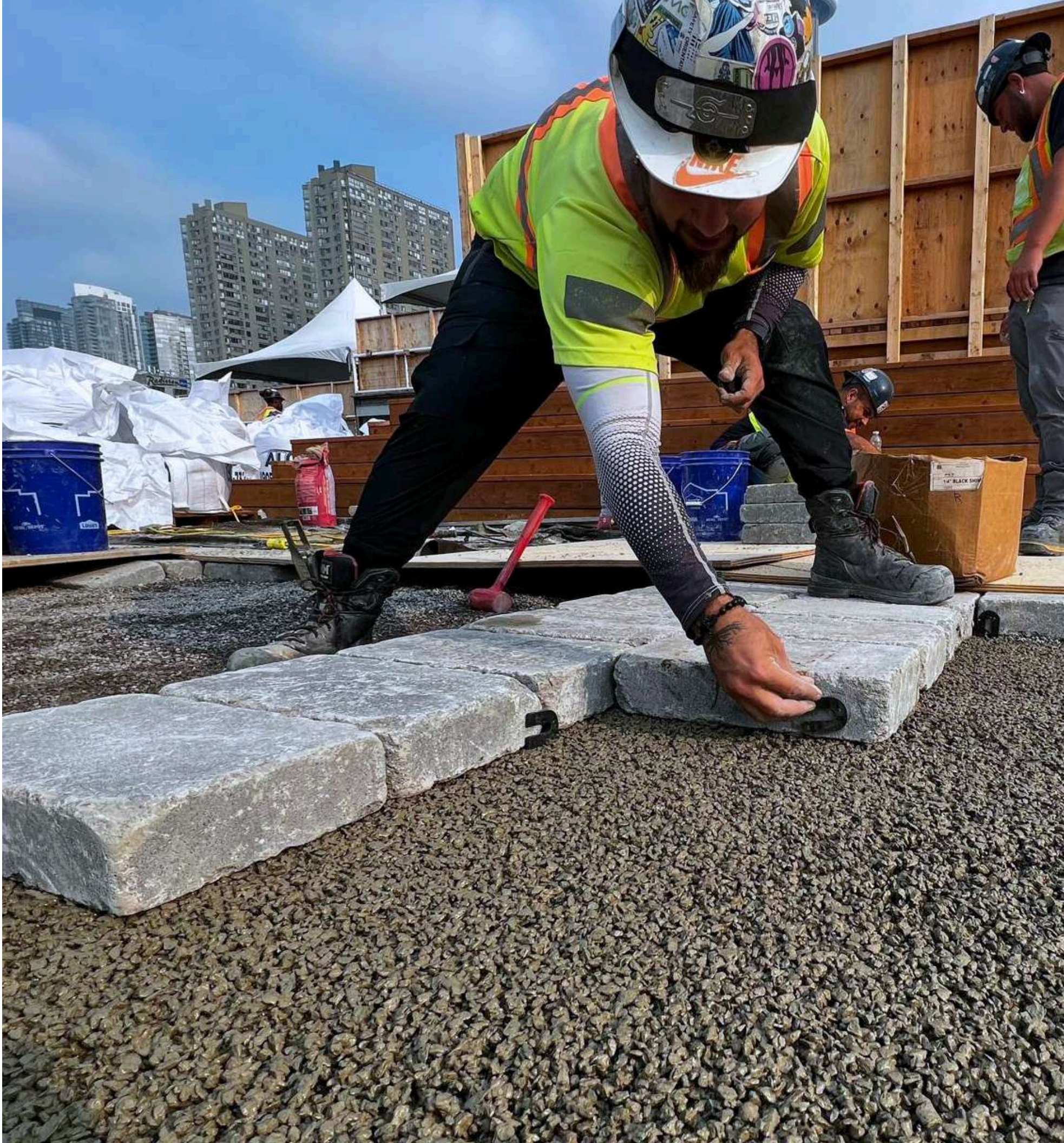
The original permeable
products in North America

PEACE OF MIND

Our long lasting products have been rigorously tested so you can have peace of mind knowing your project will stand the test of time.



50 year life expectancy





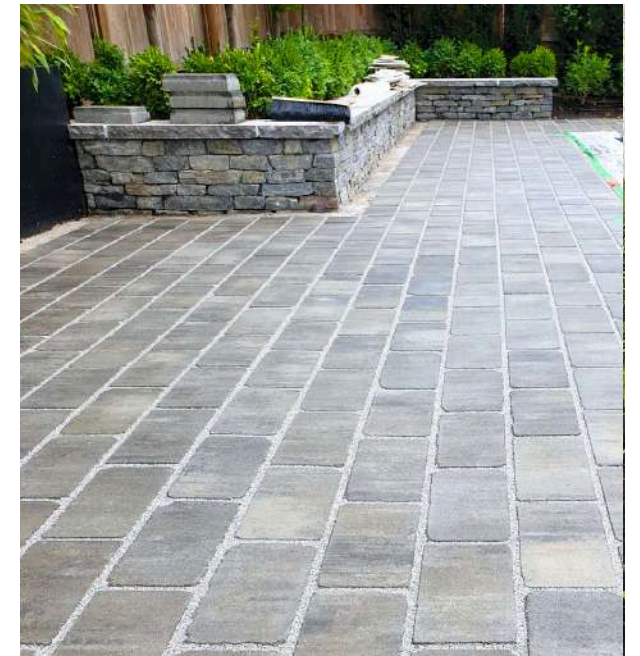
APPLICATIONS

Residential &
Commercial

PATIOS

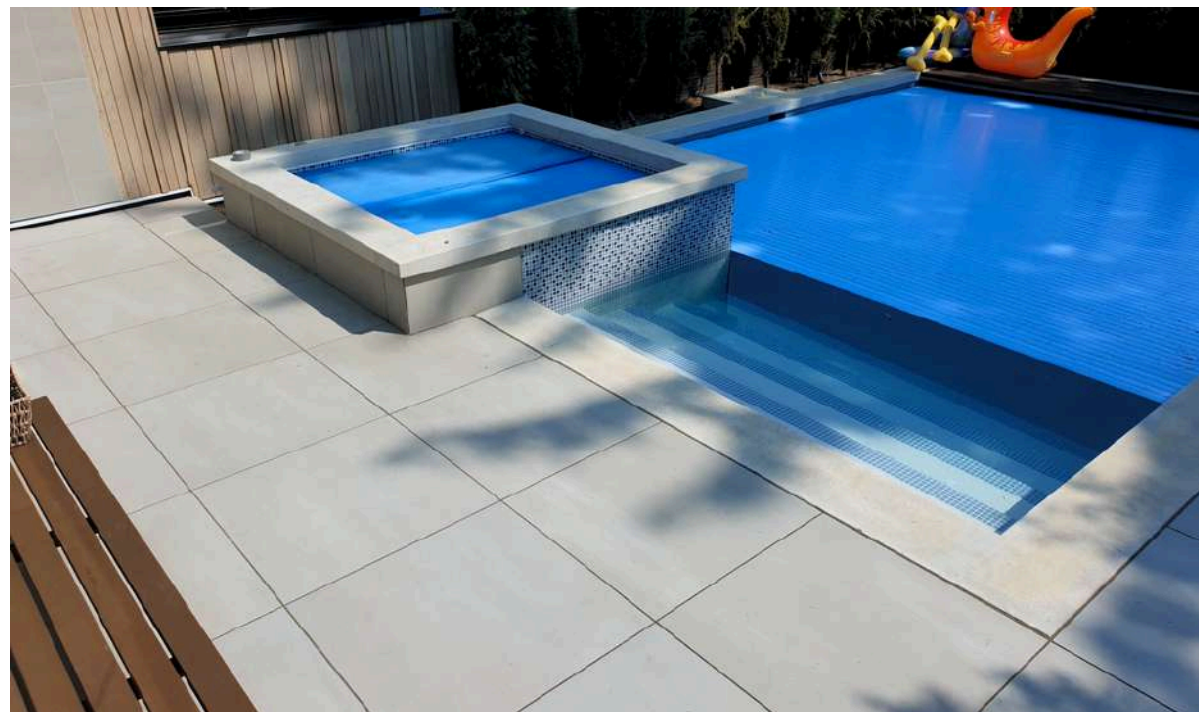
A well-crafted patio enhances the delight of outdoor living. No matter the size, ROMEX patios effortlessly improve any backyard, crafting the perfect gathering spot for your friends and family. With our extensive range of products, you can enjoy enduring elegance with a stunning surface that prevents ants and weeds to ensure your space remains beautiful for years to come.





PATHWAYS

A thoughtfully crafted pathway not only enhances the functionality of a space but also infuses it with comfort and aesthetic appeal. With the diverse range of our products, you can explore endless design options that seamlessly integrate with your outdoor environment, all while ensuring compliance with permeability regulations.



POOL DECKS

Your investment should always look and perform at its full potential. That's why ROMEX jointing is pool-chemical tested and approved. Our products not only enhance the visual aesthetics of your pool deck but also guarantee unmatched reliability, ensuring you are able to create lasting memories every summer.

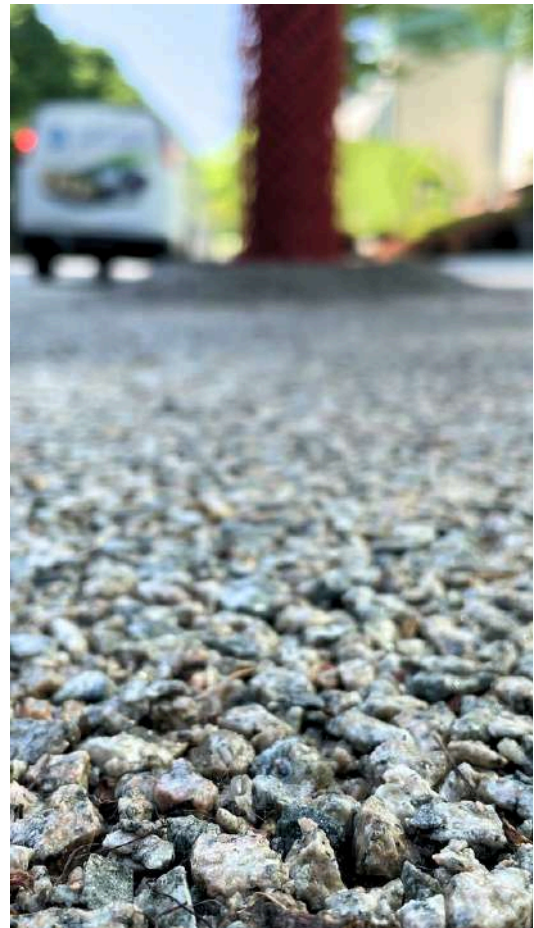




DRIVEWAYS

Beyond mere aesthetics, our carefully crafted jointing products are engineered to withstand pressure washing and are compatible with radiant heat, to ensure the introduction to your home remains functional and stunning, no matter the season.





TREE SURROUNDS

Compliment the beauty of nature with our highly permeable tree pit solution, ensuring optimal water drainage while elegantly preventing the inconvenience of loose gravel and roots damaging the surface. Experience a seamless blend of functionality and aesthetics for thriving urban greenery.





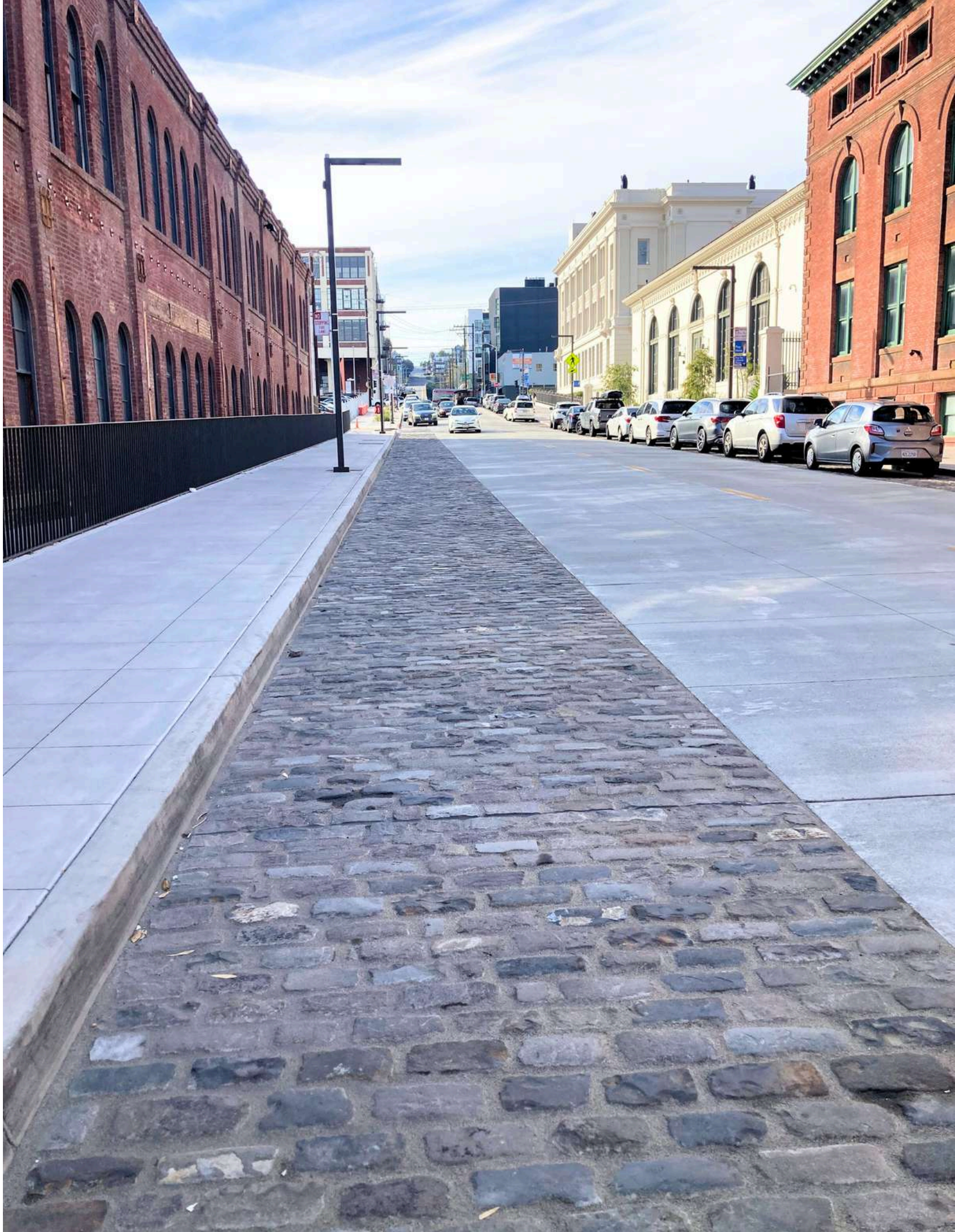
PUBLIC SPACES

Elevate public spaces with our enduring products. From city squares to community gardens, our durable surfaces withstand the test of time. Eliminating frequent maintenance, our long-lasting materials ensure a beautiful and inviting space all year round.



ROADS & STREETS

Experience the epitome of durability and reliability with our unique un-bonded system, a seamless fusion of innovation and strength. Backed by a reassuring 5-year warranty, our solution ensures longevity, making it the ideal choice for resilient roads and streets. We also produce a highly robust pothole fix that is easy to install, cures quickly and does not require an asphalt truck.





PRODUCTS

Permeable & Durable
Core Product Line

FUGENSAND

Jointing Sand & Stabilizing Sealer

FUGENSAND is perfect for narrow joint widths between 1/16" - 1/4"| 1mm - 5mm and works well for any unbonded projects. This combo is incredibly easy to install, just sweep the sand into the joints, hose down the surface and squeegee the sealer on top. Due to its stabilizing properties, this sand is now pressure washer-safe, ensuring the surface stands the test of time.

- 2 in 1 stabilizer/sealer
- Pressure washer safe
- No cement haze/residue
- Works with tight paver joints
- Same installation as poly sand but categorically stronger



Pressure Washer Safe



Ideal for driveways and interlocking pavers

Scan for more info!





ECOFINE

Resin Jointing Sand

ECOFINE ready mixed jointing mortar is incredibly easy to install and perfect for joint widths greater than 1/8" | 3mm on porcelain tile and 1/4" | 5mm on natural stone or concrete pavers. Empty this vacuum-packed mortar onto your surface, apply water and squeegee the product into the joints. Once ECOFINE reacts to the air it will harden preventing ants/weeds and eliminating the need for replacement or touchups.

- Compatible with any paver
- Resin Film Free
- Highly Water Permeable
- Ready-Mixed
- Pool Chemical Tested
- Easy to use



Ant Resistant



Weed Resistant



Scan for more info!



Ideal for pool decks, patios and pathways.



FLEX JOINT

Flexible Resin Jointing

The world's first flexible and permeable jointing mortar is made from a combination of sand, rubber and visco elastic resin and is perfect for unbonded surfaces. This innovative product is a perfect replacement for loose grit and allows for regular pressure washing. Simply mix with water in a cement mixer or directly in the bucket with a drill mixer on smaller projects. FLEX JOINT is compatible with any joint width over 3/8" | 8mm and is perfect for use on permeable pavers or control joints in bonded construction.

- Vehicle loading up to 25 T
- Ideal for unbonded construction
- Bonded performance on unbonded application
- Used in combination with our ISATec 5-year warranty displacement protection system



Scan for more info!



Ideal for parking lots & permeable pavers.



TRASS BED

Paver Bedding

This frost-resistant permeable paver bedding is formed by mixing with ASTM #9 stone and water. Once levelled, our thin-set product is applied on the back of each paver to form a wet-on-wet, bonded connection with the TRASS BED that eliminates paver movement. This concrete mud slab replacement combines both the slab and the mortar, creating a faster installation. TRASS also contains 20 - 30 % less embodied carbon than concrete, making it a sustainable substitution for on-slab applications.

- Traffic loads up to 40 T
- Extremely Durable
- Water permeable
- Frost resistant
- 10-Year Warranty Options



No Paver Shifting



Frost Resistant



Scan for more info!



Ideal for all residential and commercial spaces.

PROFI-DEKO

Gravel Binder

PROFI-DEKO bonds any clear aggregate without fines. Simply mix the resin with your choice of gravel and trowel until level to create a durable and highly permeable surface.

- Washed, dry and dust-free aggregate
- Prevents loose gravel
- For pedestrian & light vehicular loads
- Safe non-slip surface



Highly Permeable



Scan for more info!



Ideal for tree surrounds and decorative drainage areas.





D7000

Rock Dust Stabilizer

D7000 bonds rock dust or any aggregate with fines. To install this innovative product, simply pour it into a watering can, evenly coat the surface, run it over with a plate compactor then apply another top coat to create a solid surface that remains permeable.

- Suitable for aggregates with fines
- Easy topical application
- Reduces erosion on sloped areas
- Prevents dust on gravel surfaces
- Prevents weed growth



Highly Permeable



Scan for more info!



Ideal for garden pathways and public spaces.

ISATec Earth Anchors

Paver Displacement Tool

ISATec Earth Anchors are placed between pavers and dig into the base to reduce paver shifting and displacement by up to 70%. It also reduces the requirements of pouring concrete bands and it's a perfect solution for paving stone roadways and parking lots.

- Hot galvanized
- 5-Year Warranty options
- Engineering plans designed by ROMEX
- Eliminate damaged/replacement of pavers



No Paver Shifting



Scan for more info!



Ideal for roads, streets and driveways.





ASSEMBLIES

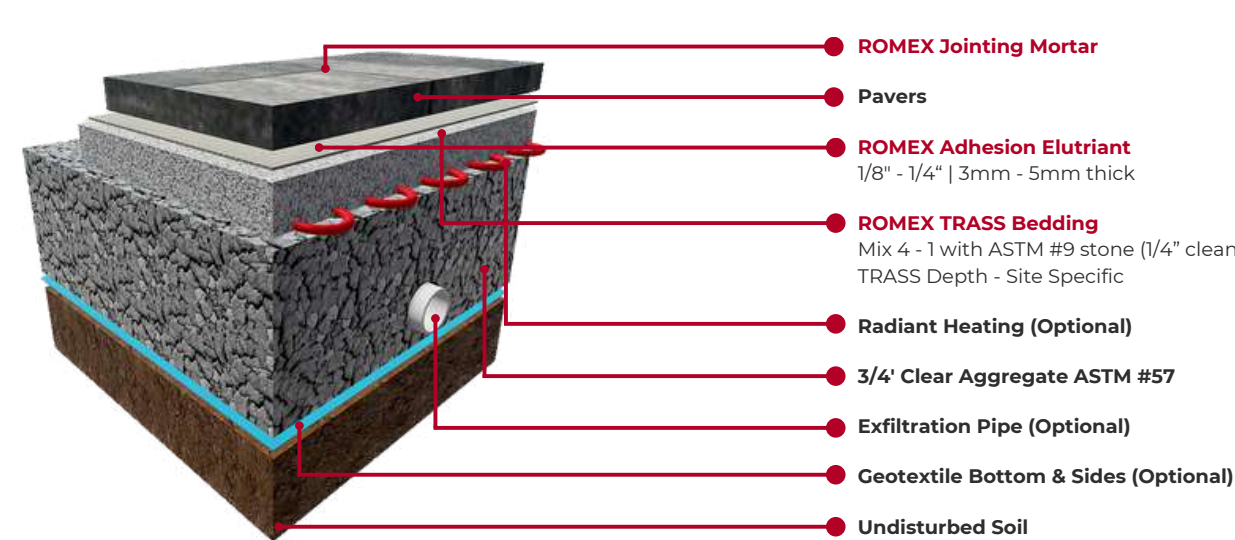
System Buildup
Materials & Options

STANDARD BUILDUPS

ASK HOW TO RECEIVE 10-YEAR WARRANTY

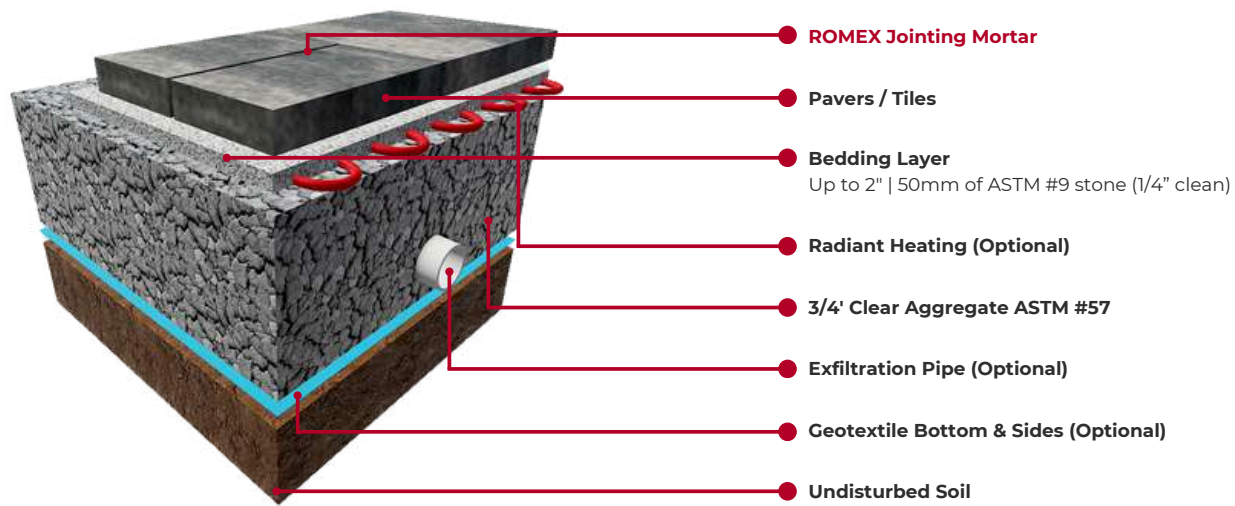
RSG With Pavers

Permeable bonded system with a 10-year warranty for setting of natural stone, concrete pavers, clay brick or wooden pavers to support all load classes.



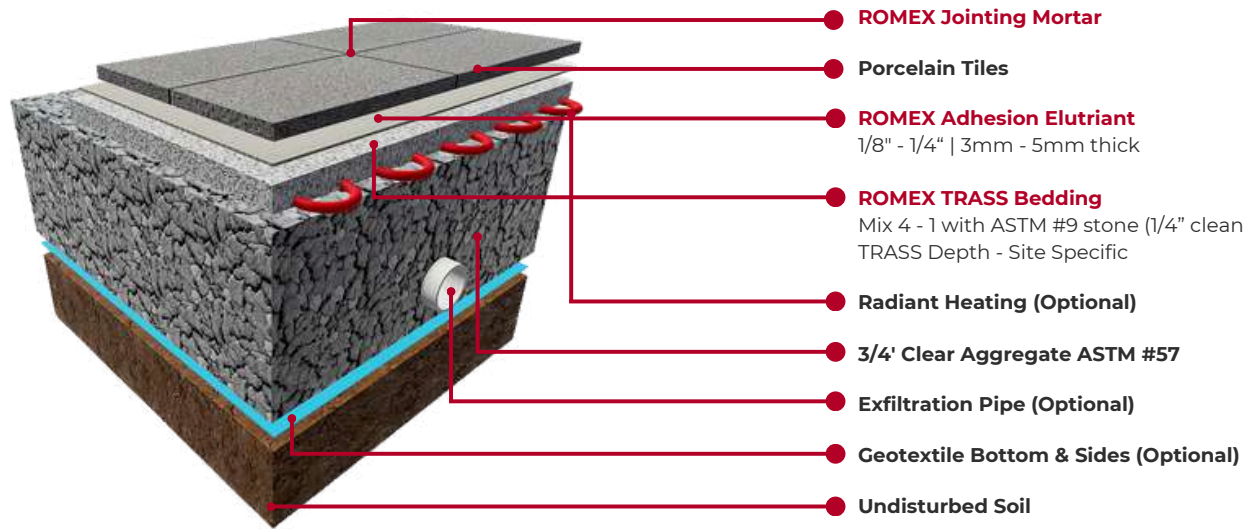
Open Graded

The ideal permeable unbonded settlement and frost-free paver base system.



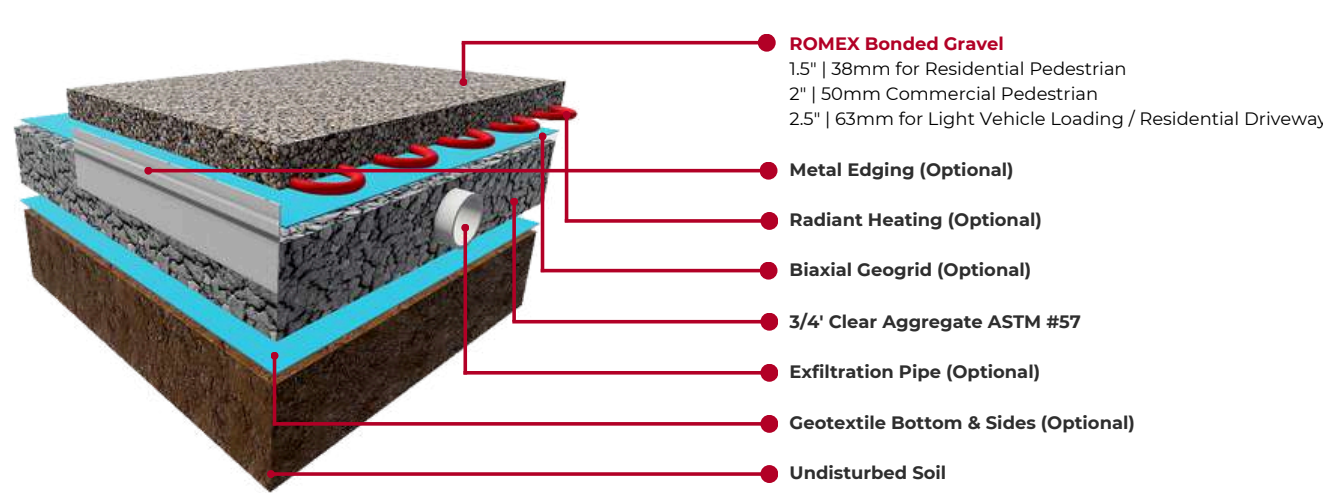
RSG With Porcelain

Permeable bonded system with 10 year system warranty for setting of porcelain to support all load classes.



Bonded Gravel

Highly permeable, UV stable system for a wide variety of uses including but not limited to Pathways, Tree Surrounds, Driveways or where highly permeable surfaces are required, using as a drain replacement.

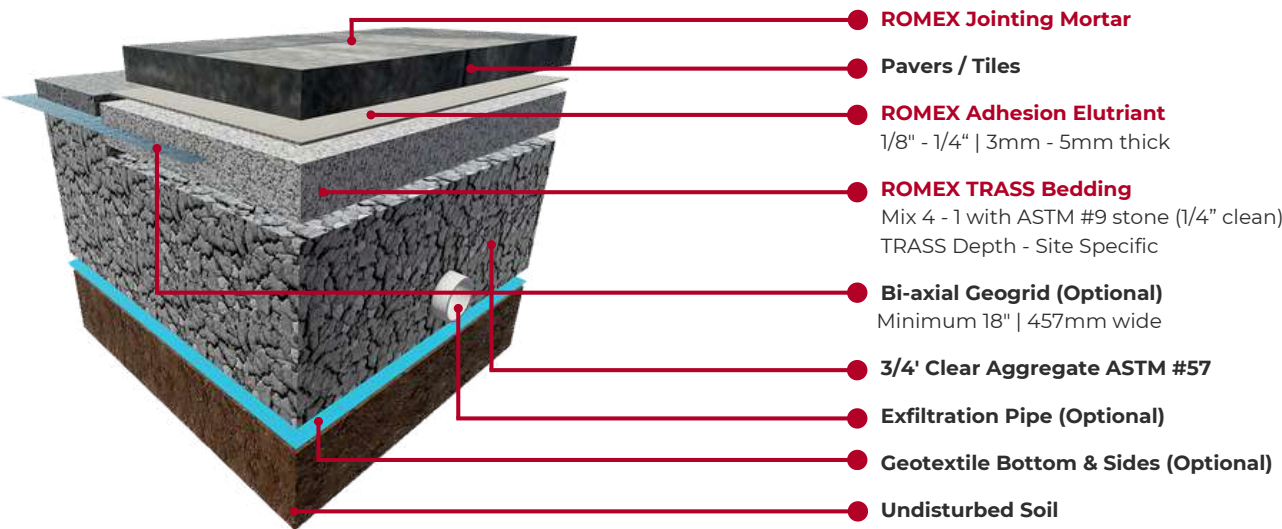


SPECIAL BUILDUPS

ASK HOW TO RECEIVE 10-YEAR WARRANTY

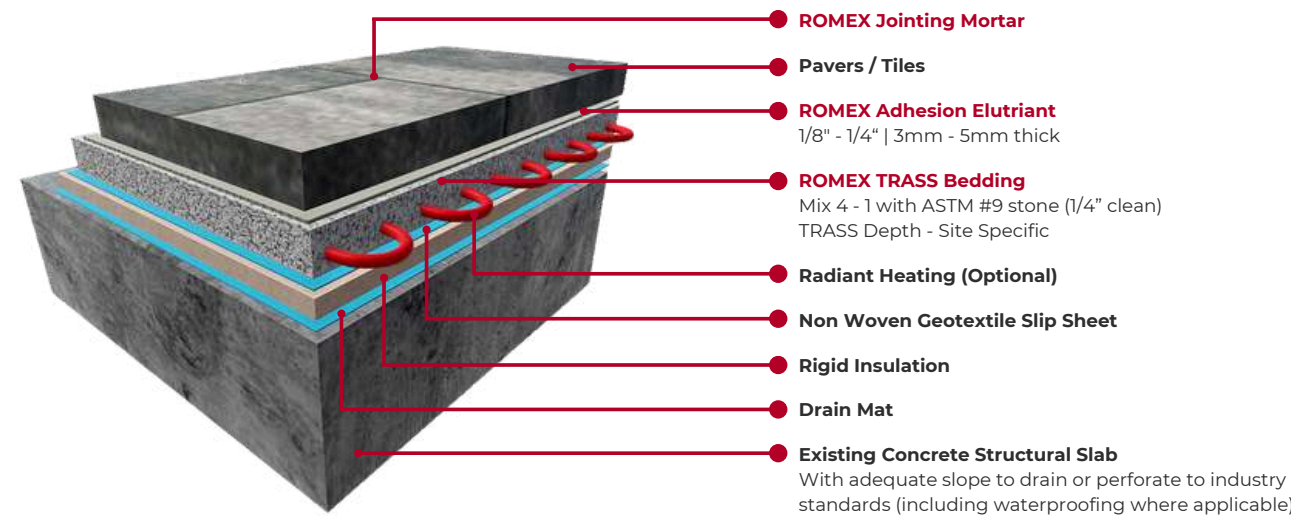
Bonded Edge Restraint

For pedestrian and vehicular areas providing a permeable and concealed edge for unbonded paving systems allowing a seamless transition to softscapes or other adjacent surfaces. 5-Year Warranty



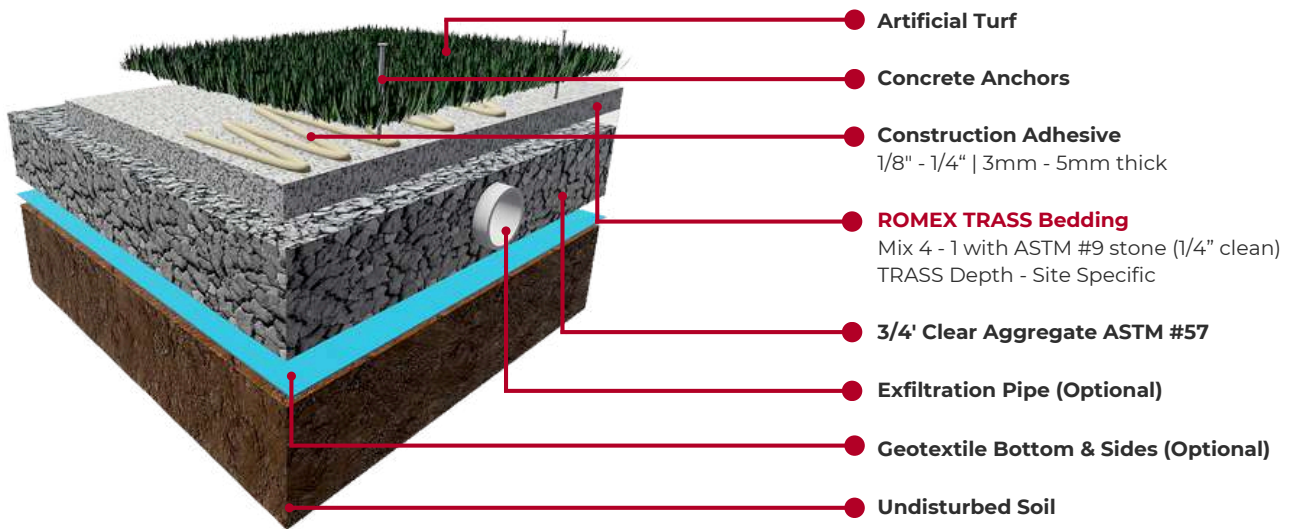
Insulated Slab

Permeable bonded system for roof deck systems where R-value must be considered.



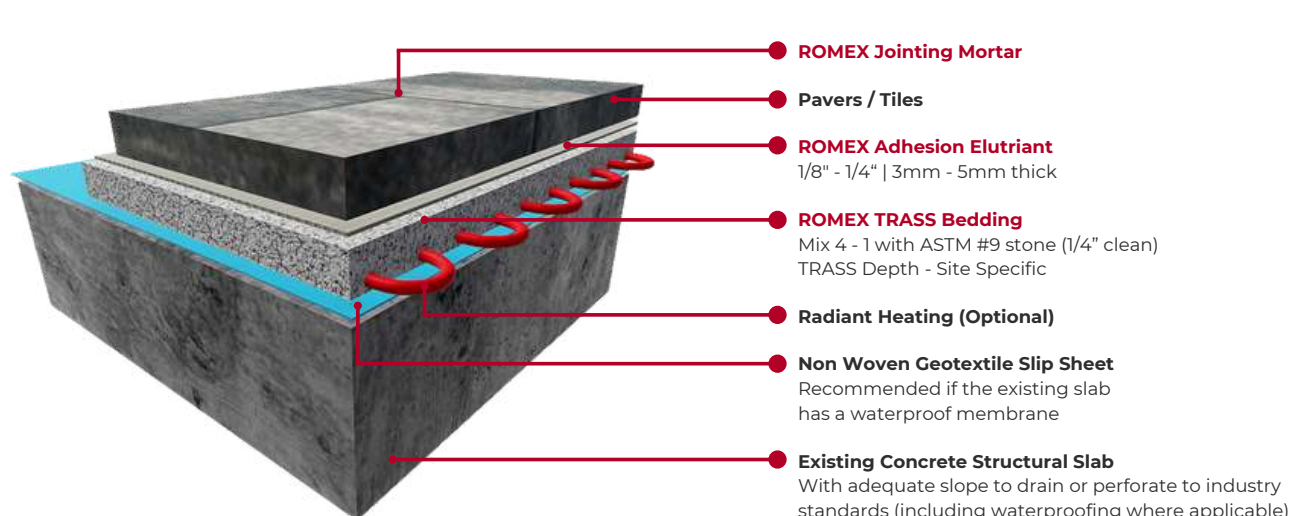
Grass on TRASS

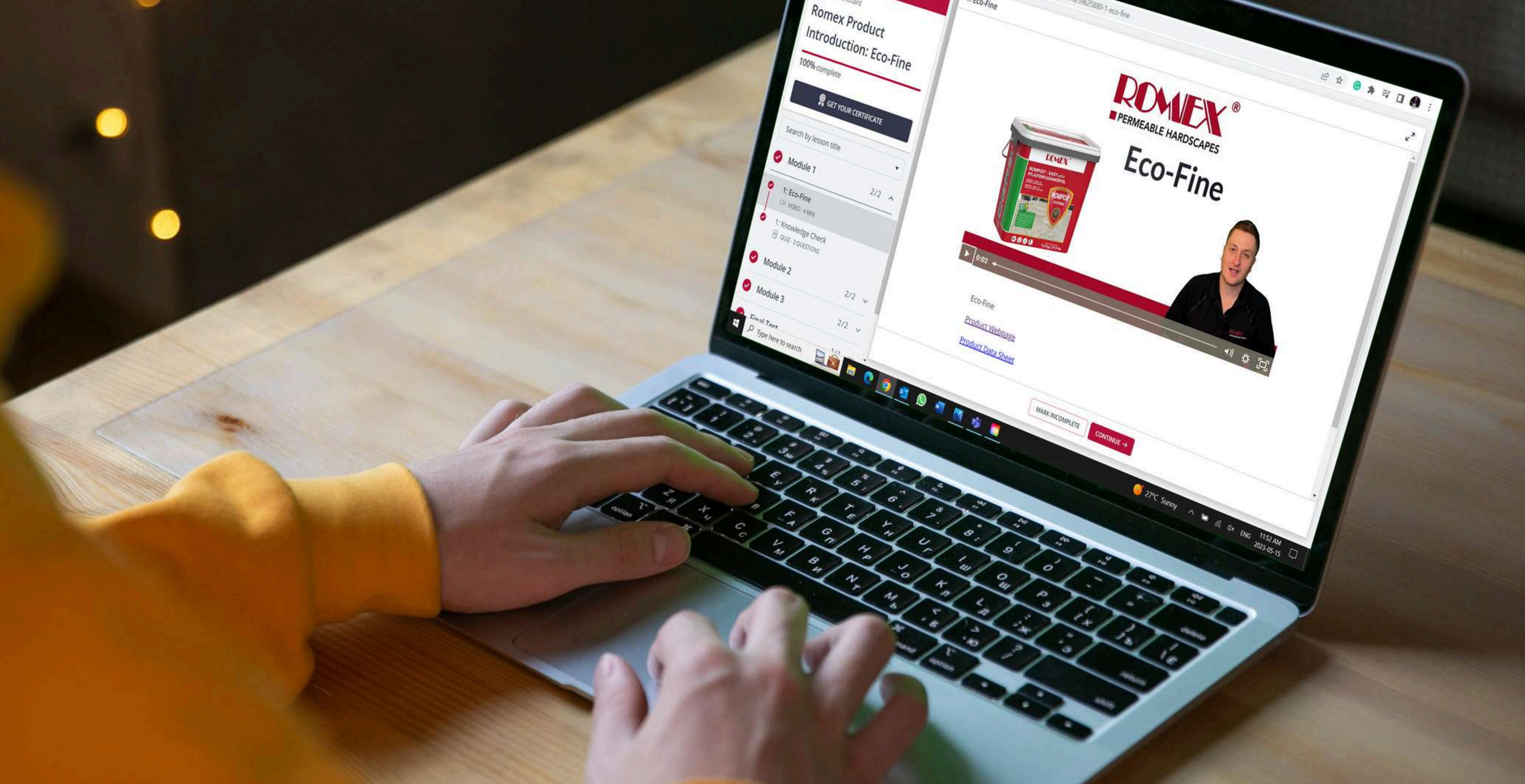
Provides a settlement-free highly permeable base allowing for vehicle access if required without rutting and is a great solution for pet areas.



Non-Insulated Slab

Permeable bonded system for roof decks or over existing or structural slab applications.





RESOURCES

Educational Tools &
Contact Information



ESTIMATING & PRODUCT SUPPORT

Curious about product pricing and buildup support? Give us a call at the number below to connect with an experienced and helpful ROMEX representative who will answer all your questions. 1-844-529-2330



FREE ONLINE COURSES

We offer free online courses so you can provide peace of mind on your next ROMEX installation. Learn how quick and easy our products are to use by signing up to become a ROMEX recommended installer. Our courses are offered on the homepage of our website. www.romexhardscapes.com



FREE ON-SITE TRAINING

We offer up to 2 hours of free onsite training and expert guidance for anyone who has never tried our products and is located in a ROMEX-represented province or state. Contact us to see if you qualify for our onsite support. info@romexhardscapes.com



YOUTUBE INSTALLATIONS

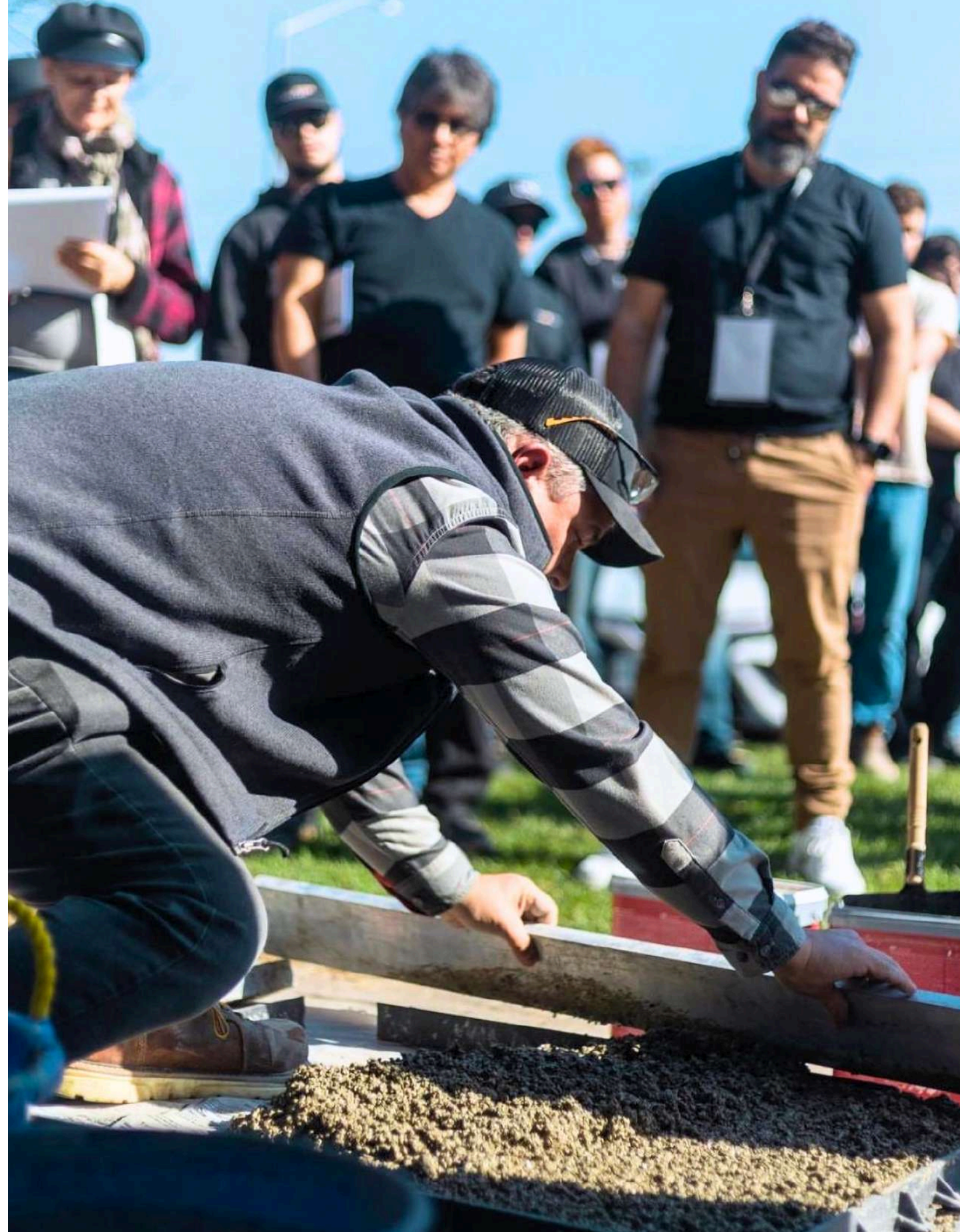
Check out our large variety of installation tutorials and tips and tricks videos on our YouTube channel. Educate yourself on our diverse and versatile product line to discover all the ways ROMEX can help you. [@romexhardscapes](https://www.youtube.com/@romexhardscapes)



CALCULATOR & ESTIMATING GUIDES

Do you want to figure out the square-foot cost of our products? Check out the resources tab on our website to use our product consumption calculator and browse all of our estimating guides.

www.romexhardscapes.com | 1-844-529-2330





CONTACT US

Scan the QR code below to get in touch



DURABLE SOLUTIONS, ENDLESS POSSIBILITIES

@romexhardscapes



www.romexhardscapes.com | 1-844-529-2330