



DURABLE SOLUTIONS, ENDLESS POSSIBILITIES

@romexhardscapes



[www.romexhardscapes.com](http://www.romexhardscapes.com) | 1-844-529-2330



## ROMEX® SYSTEM GUARANTEE

PERMEABLE BONDED SETTING SYSTEM WITH 10-YEAR WARRANTY



## APPLICATIONS

Residential

Commercial

## RSG COMPONENTS

TRASS BED | Paver Base

ADHESION ELUTRIANT | Thin Set

ROMEX JOINTING | Versatile Product Range

## BENEFITS

Why Use ROMEX System Guarantee?

## RSG ASSEMBLIES

RSG with Pavers

RSG with Porcelain

Insulated Slab

Non-Insulated Slab

## MORE INFORMATION

RSG vs Military Tank

Frost Resistant Testing

Radiant Heat System

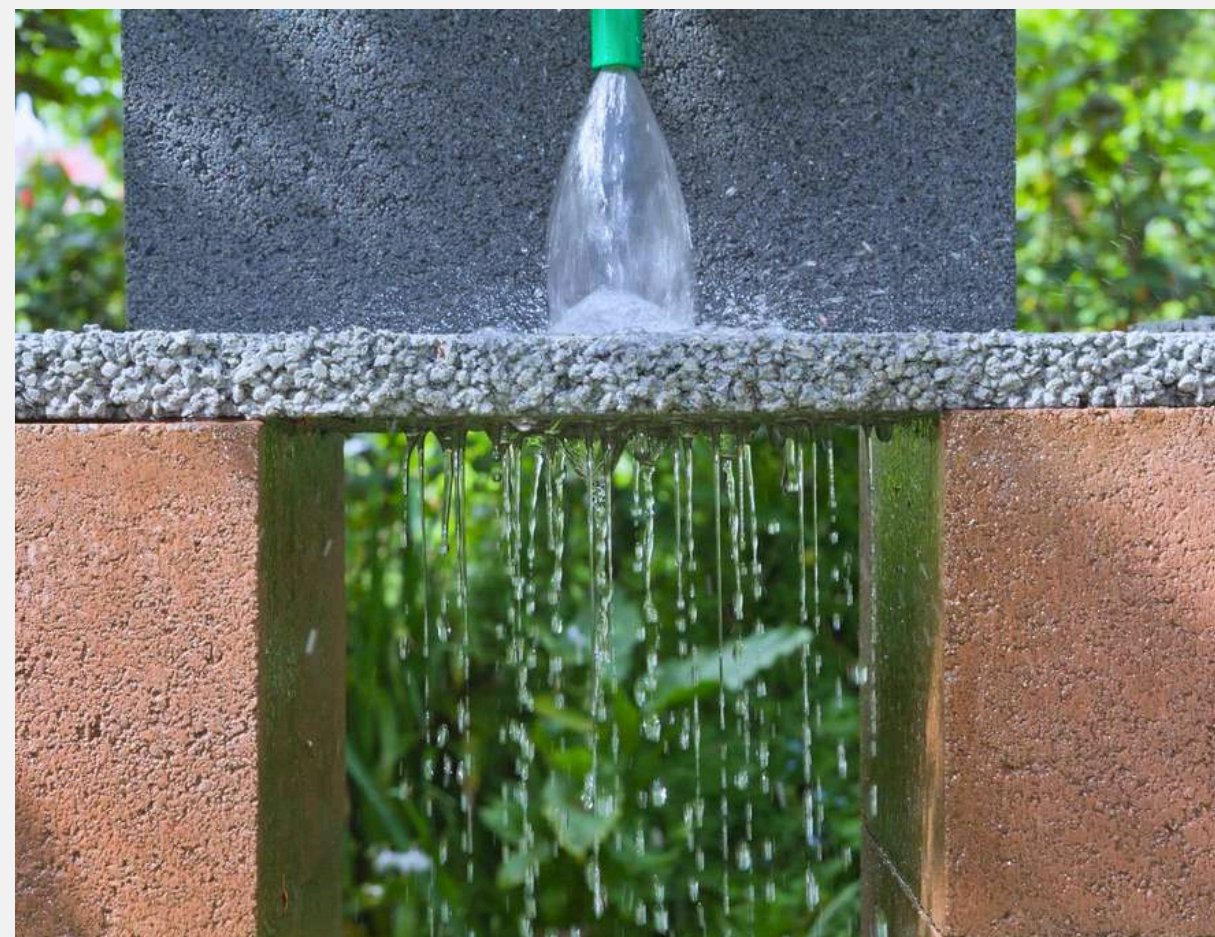
TRASS vs Concrete

Bonded Edge Restraint

Grass on TRASS

Learn how to prevent paver movement.

## THE WORLD'S FIRST PERMEABLE SLAB



### Frost Resistant Bonded System

RSG is our manufacturer-backed 10-Year Warrantied System that includes labour and materials. It is designed to deal with all pedestrian and vehicular hardscape challenges and guarantees a solid and sustainable surface.

This durable and permeable bonded system allows water to flow effortlessly through the surface and back into the ground, preventing trapped water from freezing and damaging the surface. This creates a 100% frost-resistant bonded buildup.





# APPLICATIONS

Residential &  
Commercial



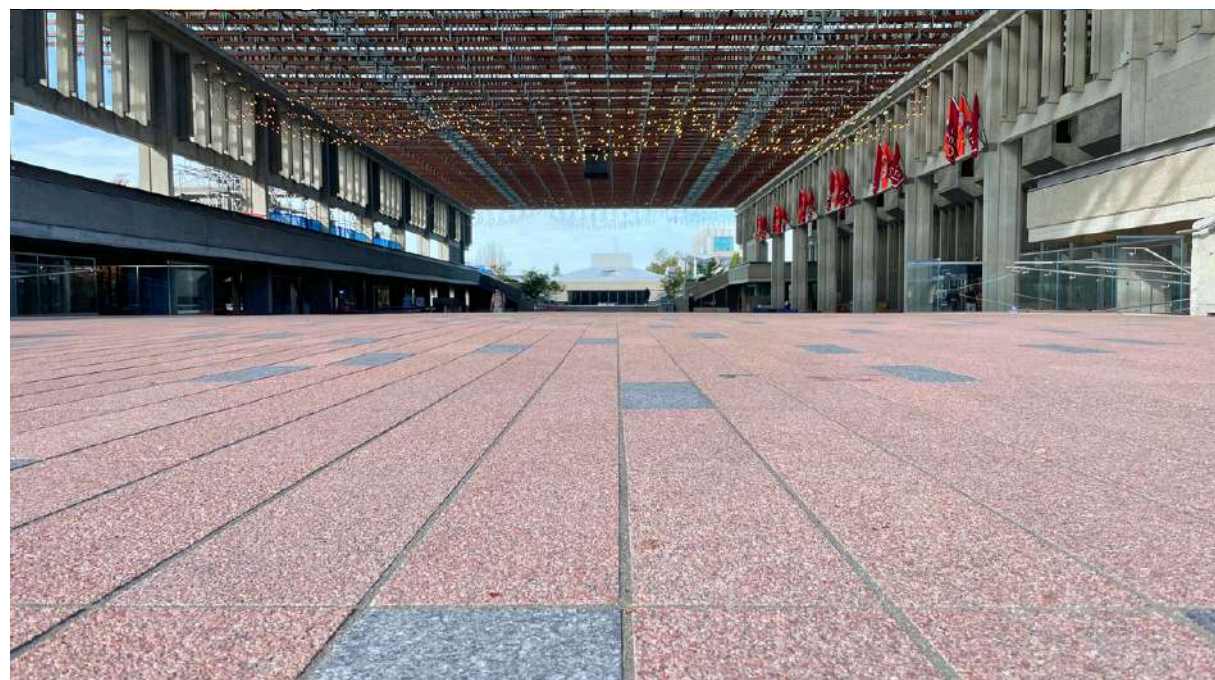


## RESIDENTIAL

RSG is perfect for any outdoor surface around your home. This adaptable system allows the use of any paver type without having to worry about surface shifting. Our durable jointing products are also incredibly easy to maintain as they are pressure washer safe and prevent ants/weeds.

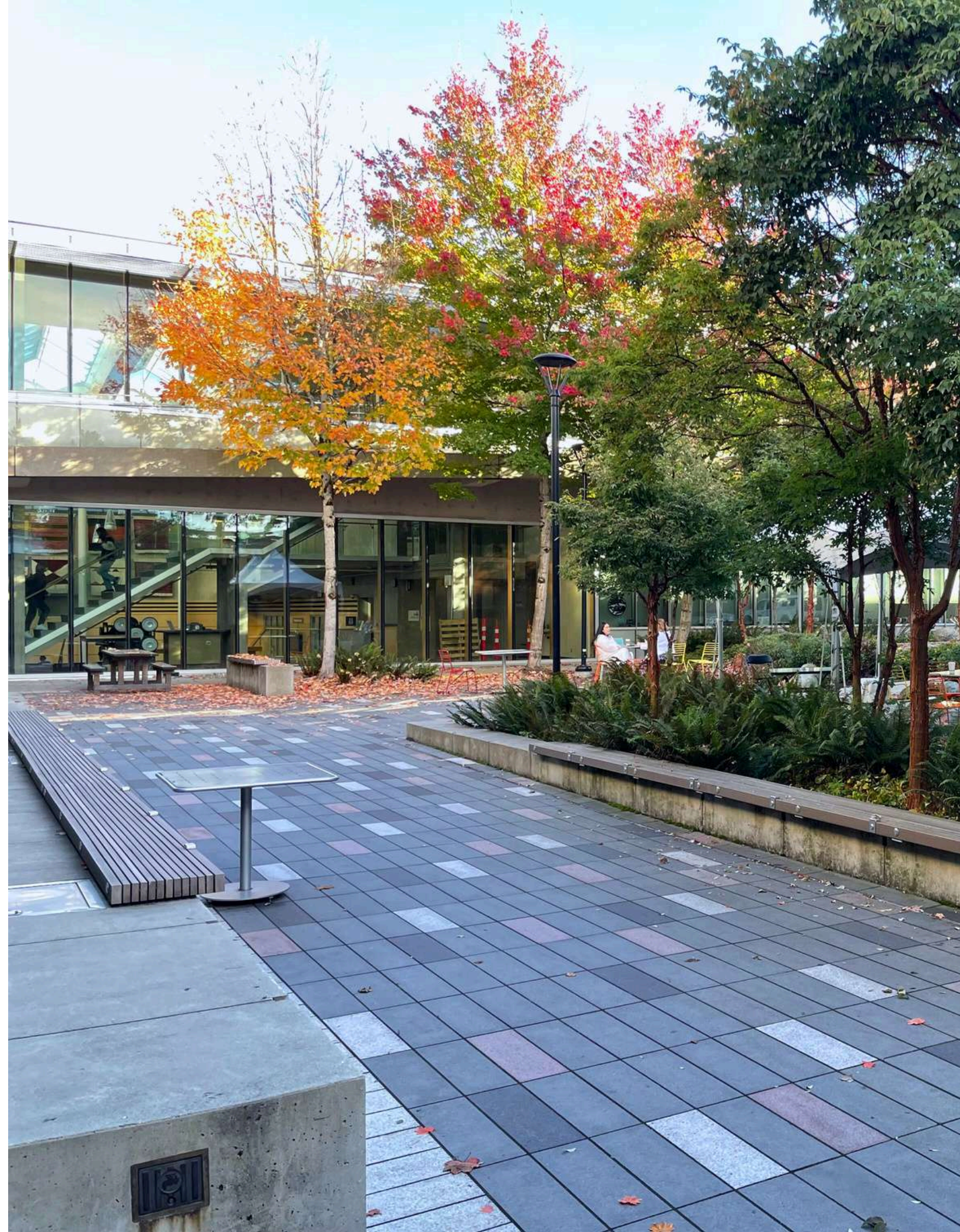






## COMMERCIAL

RSG can withstand vehicle weight upwards of 40T and can be built to comply with strict permeability regulations, making it a simple choice for any commercial project. Taking endless possibilities to the next level, ROMEX has the solution for any surface type. From Manhattan to Vancouver, SanDiego to Cleveland, we have been a trusted partner to countless contractors on their large commercial projects.







# **SYSTEM COMPONENTS**

TRASS BED  
ADHESION ELUTRIANT  
JOINTING



# SYSTEM COMPONENTS

## ROMEX TRASS BED

ROMEX TRASS BED is a permeable slab that forms the base of the system. It is applied at different thicknesses, 1.5" for pedestrian and 3" for vehicular surfaces.

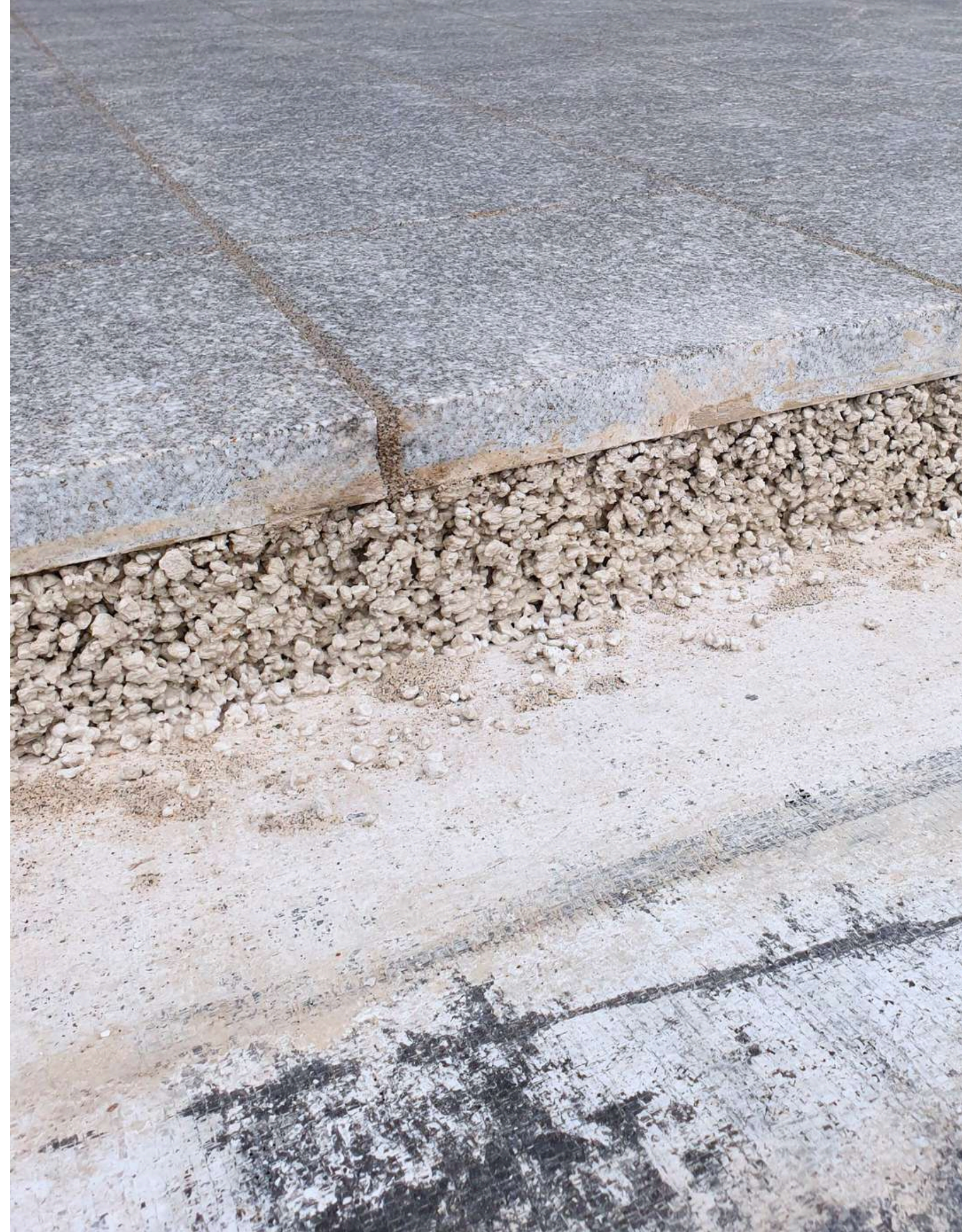
## ROMEX ADHESION ELUTRIANT

ROMEX Adhesion Elutriant is applied to the back side of the pavers and bonds them to the TRASS while still wet, creating a strong and unified bond.

## ROMEX JOINTING

ROMEX permeable jointing products are used to fill the gaps between the pavers and help provide structural integrity, locking the system in place.

All components must be used to be eligible for our 10-Year Warranty







# TRASS BED

## Paver Bedding

This frost-resistant permeable paver bedding is formed by mixing with ASTM #9 stone and water. Once levelled, our thin-set product is applied on the back of each paver to form a wet-on-wet, bonded connection with the TRASS BED that eliminates paver movement. This concrete mud slab replacement combines both the slab and the mortar, creating a faster installation. TRASS also contains 20 - 30 % less embodied carbon than concrete, making it a sustainable substitution for on-slab applications.

- Traffic loads up to 40 T
- Extremely Durable
- Water permeable
- Frost resistant
- 10-Year Warranty Options



No Paver Shifting



Frost Resistant



Scan for more info!





# ADHESION ELUTRIANT

## Thin Set

Our ADHESION ELUTRIANT thin-set is mixed with water to create a glue-like material that is applied to the back of each paver that creates a wet-on-wet, securely bonded connection with the TRASS BED preventing any paver movement or displacement.

- Extremely Durable
- Polymer-enhanced
- Contains Trass cement
- Binds to Tile Base



No Paver Shifting



Frost Resistant



Scan for more info!







# JOINTING PRODUCTS

## Permeable & Durable Jointing Line

ROMEX jointing line is incredibly easy to install and perfect for any joint widths or paver type. Squeegee the product into the joints and once it reacts to the air it will harden preventing ants/weeds and eliminating the need for replacement or touchups.

- Compatible with any paver
- Highly Water Permeable
- Easy to use
- Pressure Washer Safe
- Does not require replacement



Ant Resistant



Weed Resistant



Scan for more info!







# BENEFITS

Why Use ROMEX  
System Guarantee?





# RSG BENEFITS



## No Paver Shifting

ROMEX System Guarantee forms a bonded, wet on wet application that attaches the bedding to each paver eliminating the chance of movement.



## Frost Resistant

This permeable system prevents water from getting trapped and leading to freeze/thaw damage by allowing water to pass directly through.



## Vehicle Rated

RSG has been rigorously tested to withstand heavy vehicle traffic up to 40T and has even been tested with a military tank over porcelain tile.



## Highly Permeable

Able to comply to any permeability regulations, this durable system is also a more sustainable assembly than other bonded options.



## 10-Year Warranty

With our unwavering commitment to customer satisfaction, ROMEX ensures that your investment is not just a purchase – it's a guarantee.





**RSG ASSEMBLIES**

ROMEX 10-Year  
Warranty Systems

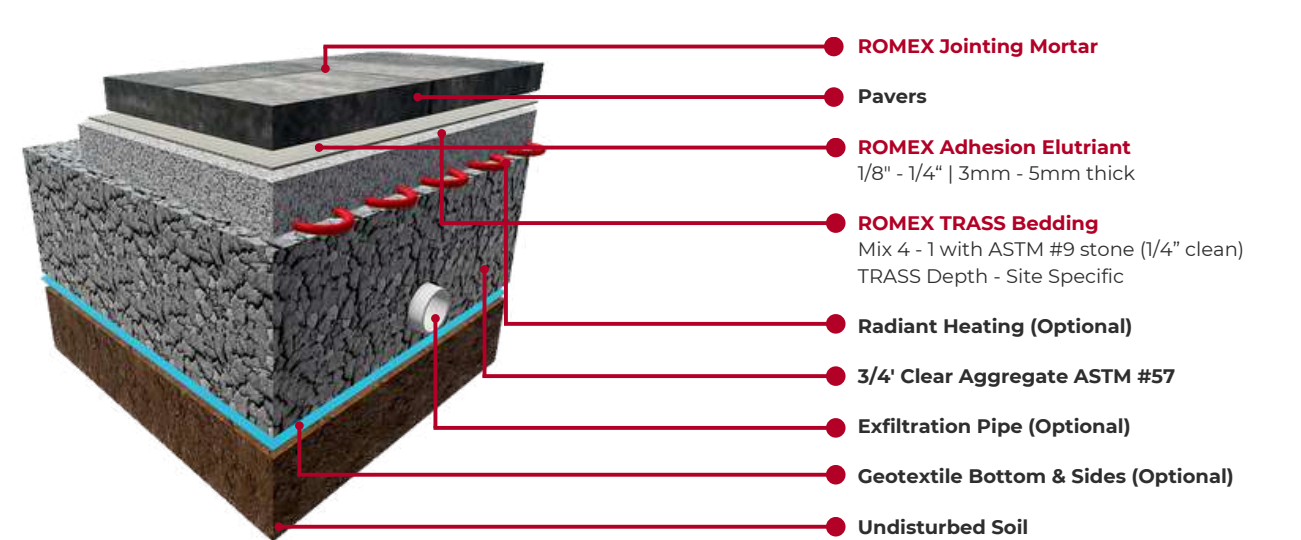


# SYSTEM BUILDUPS

ASK HOW TO RECEIVE OUR 10-YEAR WARRANTY

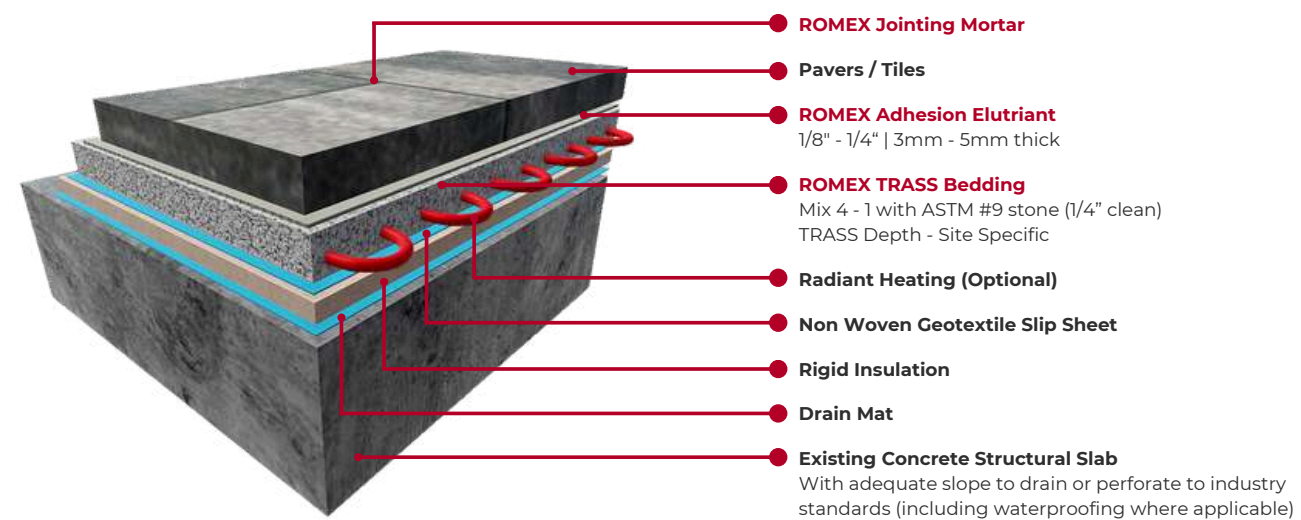
## RSG With Pavers

Permeable bonded system with a 10-year warranty for setting of natural stone, concrete pavers, clay brick or wooden pavers to support all load classes.



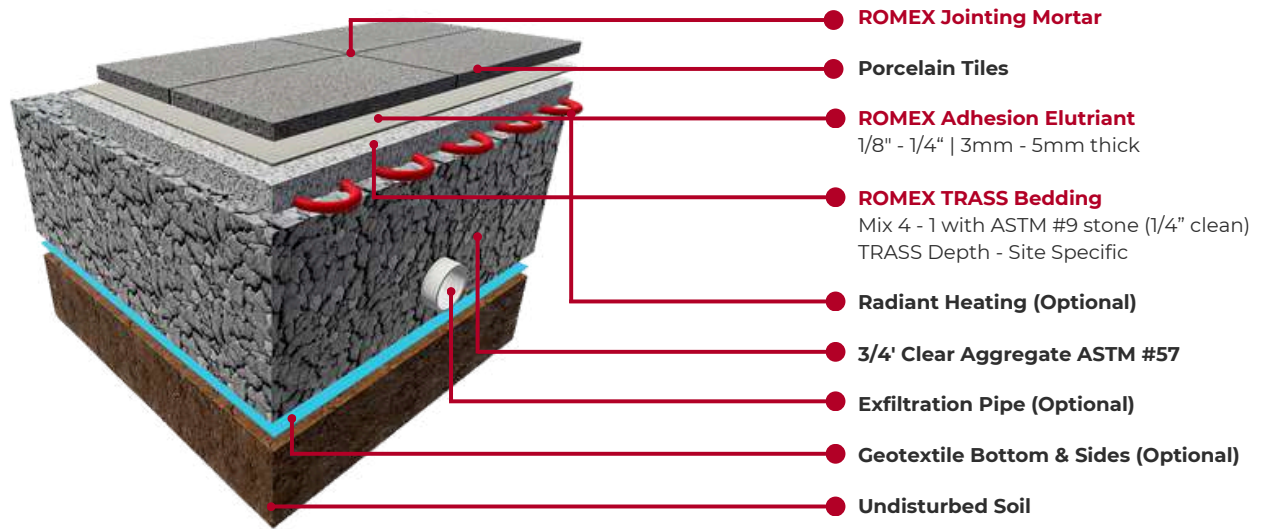
## Insulated Slab

Permeable bonded system for roof deck systems where R-value must be considered.



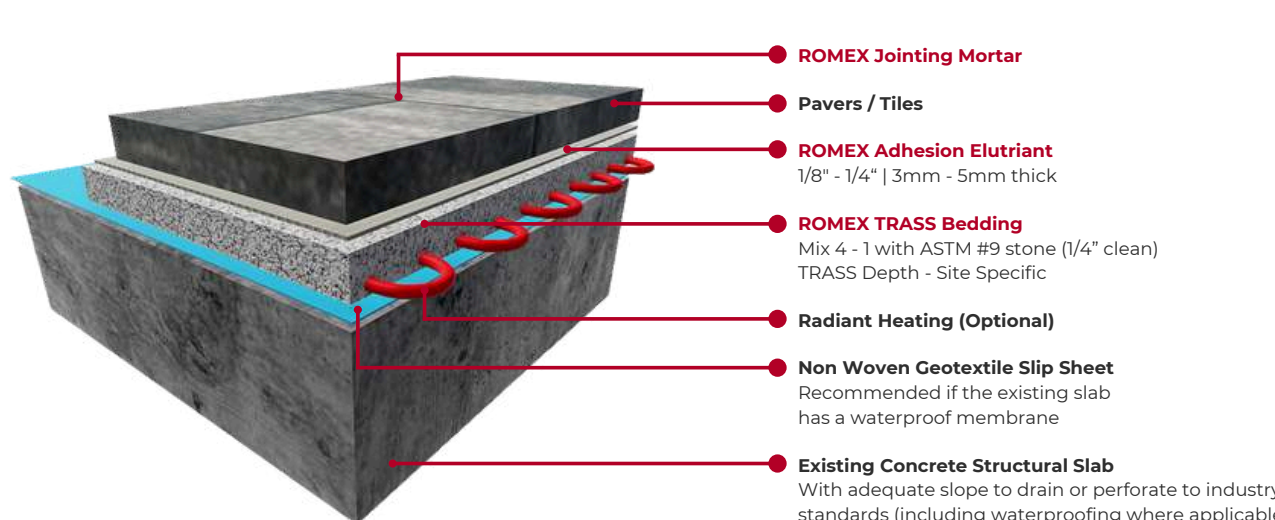
## RSG With Porcelain

Permeable bonded system with 10 year system warranty for setting of porcelain to support all load classes.



## Non-Insulated Slab

Permeable bonded system for roof decks or over existing or structural slab applications.







**MORE  
INFORMATION**

Discover More About  
ROMEX System Guarantee





## RSG VS MILITARY TANK

This system truly is the epitome of surface durability and resilience. Blending raw strength with sustainable practices, ROMEX RSG is unmatched.

To showcase the ability of our system we tested it with a military tank over porcelain tile. Scan the QR code below to see the video and assembly explanation.





## FROST RESISTANT TESTING

RDH Building Science conducted freeze-thaw testing on a 12"x12" sample of our RSG. This procedure simulated extreme weather conditions where the sample underwent 50 freeze-thaw cycles, showing no visible decay of the paver units, jointing, TRASS BED or ADHESION ELUTRAINT.

This is because TRASS BED contains up to 50% void space and water only expands by 10% leaving lots of room for expansion before blowing out.



Ask for a sample and  
freeze it yourself!







## RADIANT HEAT SYSTEM

RSG is not only fully compatible with radiant heat products but it is also more efficient and has a lower operational cost than traditional methods. This is because sand is an insulator for heat transference whereas TRASS BED is a conductor.

It's also a much quicker installation process with a simpler build-up due to fewer trades to coordinate at once and the wet-to-wet application of the pavers resulting in decreased cure time.



Reduce snow removal  
maintenance next winter.



## TRASS VS CONCRETE

ROMEX TRASS BED has significant advantages compared to concrete. With no forming, rebar, efflorescence or slab prep, TRASS is the best choice for increased time cost savings and more sustainable surfaces.



20% - 30% less embodied carbon than concrete.







## BONDED EDGE RESTRAINT

ROMEX bonded edge system only requires the perimeter tiles to be bonded with TRASS while the interior tiles will be bonded to the open-graded base.



Cost effective option compared to RSG-10.



## GRASS ON TRASS

With TRASS, there's no concern about shifting, settling, or drainage failures common with conventional bases. The result? A faster, cleaner installation process, reduced maintenance, and an eco-friendly solution that ensures your artificial turf stays lush and level for years to come.



Ideal for pet enclosures  
with reliable drainage.

